

▶ people first



*414 Randolph Street
Glencoe, IL 60022*

Features Sheet

414 Randolph Street

Glencoe, IL 60022

Outstanding value and great amenities abound in this stone and cedar home located close town, train, schools and Watts Park. From the inviting arched stone entry to the bright and airy family room opening to the flexible yard with patio, this home offers the space and flow for fine living and entertaining. Versatile island kitchen, separate breakfast area with workspace cabinets and family room with limestone fireplace combine to offer an open and comfortable living area for all of today's families. Sun-filled master suite with serene marble bath provides privacy from busy households.

Wonderful space in a well-appointed basement includes a distinct media room with country fireplace, flexible game, play or sitting area, fifth bedroom and an office or exercise room. Add in low maintenance, energy efficiency and whole house media, and you can begin to appreciate the value in this home.

Features and Amenities:

Entry Foyer:

- » Welcoming, warm foyer
- » Red oak flooring leading to custom oak and hardwood staircase
- » Tear dropped old bronze chandelier

Gourmet Kitchen:

- » Maple cabinets with mocha glazing
- » Granite counters with thickness of 1 1/4"
- » Full height tumbled marble backsplash Under cabinet halogen lighting
- » Large stainless steel sink with Grohe Faucet
- » Work area in breakfast room
- » Oil-rubbed bronze chandelier in breakfast area
- » Under cabinet halogen lighting
- » Appliances Include: Subzero refrigerator, Thermador stainless five-burner cooktop, Thermador double oven with convection, Bosch stainless steel dishwasher, Panasonic microwave oven, Kitchen Aid disposal, In-sinkerator hot water dispenser

Dining room:

- » Red oak flooring
- » Oil-rubbed bronze chandelier
- » Custom chair rail and contrast paint



Family Room:

- » Large masonry fireplace with Texas cream limestone surround and mantel shelf
- » Fan and recessed lighting
- » Red oak flooring
- » Pre-wired for HDTV, cable and surround sound speakers
- » Large cased opening between family room and breakfast area
- » High patio doors leading to patio area

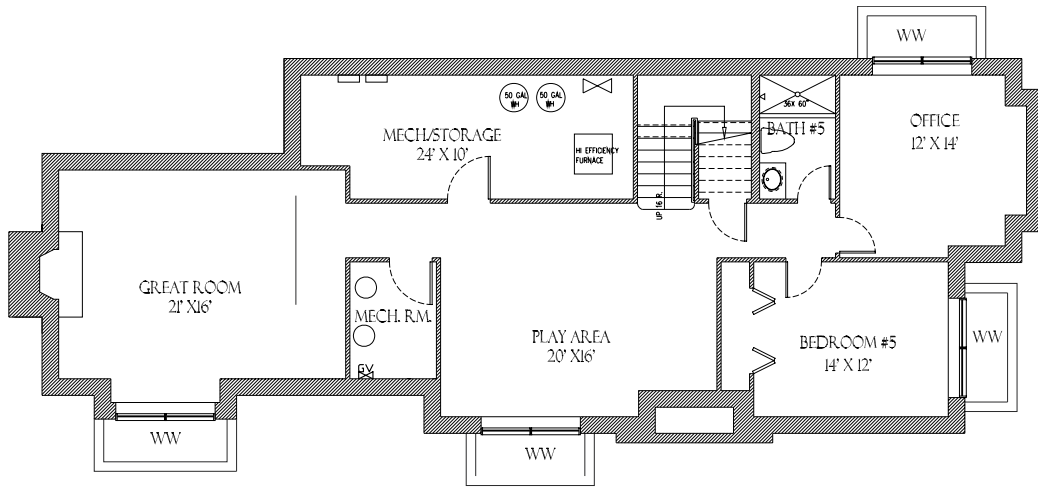
Master Suite:

- » Vaulted ceiling with lots of light
- » Red oak floor
- » Walk-in-closet with closet organizers
- » Spacious master bath with custom marble floors, walls, and counters
- » Radiant heat in master bath floor
- » His and her vanities
- » Large custom shower with multiple shower heads
- » Equipped with speakers and phone and TV cables connections
- » Large Sani-Jet whirlpool bath

General features:

- » Nine foot ceilings on ground floor
- » Custom crown molding on first floor and second floor hallway
- » Custom millwork throughout the house
- » The entire house is equipped with cable and HDTV wiring, speaker system, security system, up to 4 line phone system and data wiring
- » Solid core 4 panel doors
- » Cifial Oil Rubbed lever interior door hardware
- » Baldwin Oil Rubbed exterior door hardware
- » Wall to wall carpeting in all bedrooms and Basement
- » Jack & Jill 2nd floor hall bath with separate compartment for toilet and tub and 2 vanities
- » Ensuite bath in 4th bedroom
- » Spacious and functional laundry room on the 2nd floor
- » Large finished basement with great room and large stone fireplace
- » Zoned high-efficiency HVAC systems with humidifiers; optional electronic air cleaners.
- » Dual 50 gallon high-efficiency hot water heaters
- » Full recirculating hot water system with electric pump
- » 400 Amp electrical service
- » Stone and cedar shingle exterior
- » Marvin Ultimate Double-hung windows throughout
- » Large 2-car detached garage finished in drywall with insulated metal paneled garage doors
- » Professionally landscaped yards

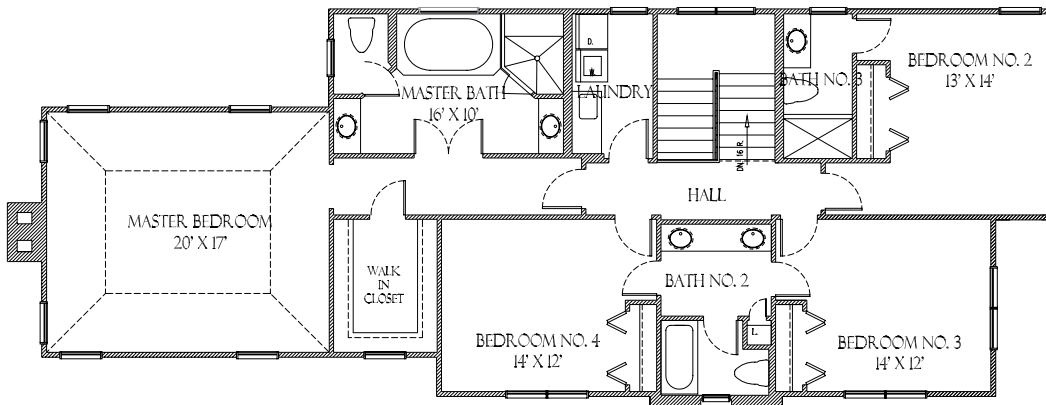




LOWER LEVEL PLAN

TOTAL FLOOR AREA: 1660' SF
(DIMENSIONS ARE APPROXIMATE)

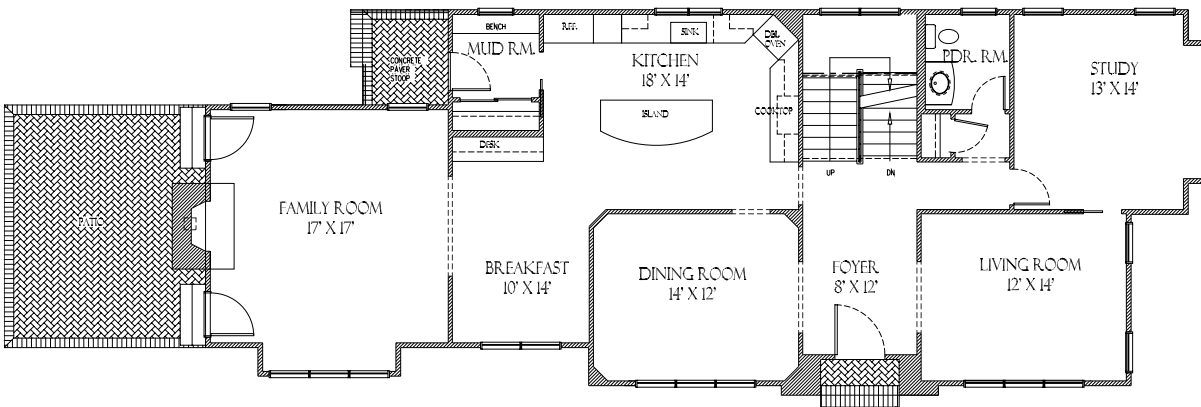
414 RANDOLPH AVE.
GLENCOE, IL
GREEN SPIRE PROPERTIES, LLC



SECOND FLOOR PLAN

TOTAL FLOOR AREA: 1575' SF
(DIMENSIONS ARE APPROXIMATE)

414 RANDOLPH AVE.
GLENCOE, IL
GREEN SPIRE PROPERTIES, LLC



FIRST FLOOR PLAN

TOTAL FLOOR AREA: 1660' SF
(DIMENSIONS ARE APPROXIMATE)

414 RANDOLPH AVE.
GLENCOE, IL
GREEN SPIRE PROPERTIES, LLC

